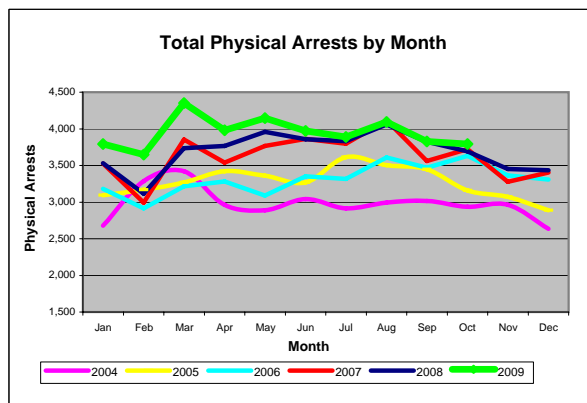
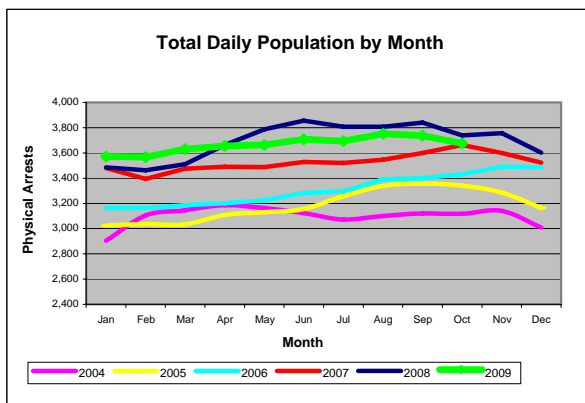


AVERAGE DAILY POPULATION REPORT Davidson County Correctional Facilities

Overview of October 2009	
1.	The ADP for October 2009 decreased 1.6% below September 2009 (from 3,737 to 3,676). The October 2009 ADP also is 1.7% lower than October 2008.
2.	In October 2009 the ADP for Locally Sentenced Felons (LSF) decreased 0.1% below September 2009's ADP, and dropped 1.5% below October 2008 levels.
3.	The ADP for the Department of Homeland Security / Immigration and Customs Enforcement (DHS/ICE) detainees increased 28.6% in October 2009 compared to September 2009. The ADP was 18 in October 2009, which is 55% below the ADP for October 2008 (40).
4.	Of the average 18 DHS/ICE inmates in the October 2009 ADP, 4 were ICE Detainers and 14 were DHS/ICE Custody Holds. On average, ICE Detainers stayed 1.7 days and DHS/ICE Custody Holds stayed 3.1 days upon release in October 2009. Overall, ICE inmates stayed 3.3 days which was 1.7% (0.1 day) shorter than in September 2009.
5.	LSF inmates comprised 31.7% of the ADP, while Pretrial Felons (PTF) made up 27.3% of the total ADP for October 2009.
6.	The ADP for Pretrial Felons declined 4.3% in October 2009 below September 2009, and also dropped 12.6% below October 2008.
7.	The ADP for Pretrial Misdemeanants decreased 0.7% in October 2009 compared to September 2009, and also dropped 7.6% below October 2008.
8.	In October 2009 the ADP for Convicted Misdemeanants & DUIs (CM+DUI) decreased 2.8% below September 2009 levels, but jumped 13.4% above October 2008.
9.	The average daily male population dropped to 3,193 (-1.4%) in October 2009, while the female daily population was 483, which was 3% lower than September 2009.
10.	All except one of the Davidson County correctional facilities were below certified capacity during October 2009. The Metro Detention Facility (CCA) operated at 103.9% in October 2009.
11.	On average, the DCSO facilities (excluding MDF) operated at 87.1% of certified capacity in October 2009.
12.	There were 3,794 physical arrests made in October 2009. This was 0.8% fewer than in September 2009, but was 2.7% higher than October 2008.



Disclaimer: All reports and other documents generated by Criminal Justice Planning are based on information drawn from databases owned and maintained by other agencies of state and local government. Therefore, Criminal Justice Planning can not guarantee, or assume responsibility for, the accuracy or completeness of the data or information reflected in any reports or other documents.

Average Daily Population Summary by Classification

Month 2009	Total ADP			Total ADP by Gender					
	Total	Monthly Change	Change Since Jan	Male	Monthly Change	Change Since Jan	Female	Monthly Change	Change Since Jan
Jan	3,572	-0.9%		3,082	-0.7%		490	-1.8%	
Feb	3,566	-0.2%	-0.2%	3,094	0.4%	0.4%	472	-3.7%	-3.7%
Mar	3,631	1.8%	1.7%	3,154	1.9%	2.3%	477	1.1%	-2.7%
Apr	3,654	0.6%	2.3%	3,173	0.6%	3.0%	481	0.8%	-1.8%
May	3,663	0.2%	2.5%	3,164	-0.3%	2.7%	499	3.7%	1.8%
Jun	3,709	1.3%	3.8%	3,203	1.2%	3.9%	506	1.4%	3.3%
Jul	3,692	-0.5%	3.4%	3,211	0.2%	4.2%	481	-4.9%	-1.8%
Aug	3,751	1.6%	5.0%	3,239	0.9%	5.1%	512	6.4%	4.5%
Sep	3,737	-0.4%	4.6%	3,239	0.0%	5.1%	498	-2.7%	1.6%
Oct	3,676	-1.6%	2.9%	3,193	-1.4%	3.6%	483	-3.0%	-1.4%
Nov									
Dec									
AVG	3,665	0.2%		3,175	0.3%		490	-0.3%	

Month 2009	PTF	Monthly Change	Change Since Jan	PTM	Monthly Change	Change Since Jan	CM+DUI	Monthly Change	Change Since Jan
Jan	1,124	1.1%		151	2.7%		679	0.3%	
Feb	1,055	-6.1%	-6.1%	148	-2.0%	-2.0%	723	6.5%	6.5%
Mar	1,050	-0.5%	-6.6%	149	0.7%	-1.3%	775	7.2%	14.1%
Apr	1,028	-2.1%	-8.5%	156	4.7%	3.3%	773	-0.3%	13.8%
May	1,033	0.5%	-8.1%	167	7.1%	10.6%	764	-1.2%	12.5%
Jun	1,036	0.3%	-7.8%	168	0.6%	11.3%	816	6.8%	20.2%
Jul	1,034	-0.2%	-8.0%	168	0.0%	11.3%	831	1.8%	22.4%
Aug	1,076	4.1%	-4.3%	148	-11.9%	-2.0%	861	3.6%	26.8%
Sep	1,047	-2.7%	-6.9%	147	-0.7%	-2.6%	845	-1.9%	24.4%
Oct	1,002	-4.3%	-10.9%	146	-0.7%	-3.3%	821	-2.8%	20.9%
Nov									
Dec									
AVG	1,049	-1.0%		155	0.0%		789	2.0%	

ADP	Average Daily Population
PTF	Pretrial Felons
PTM	Pretrial Misdemeanants
CM+DUI	Convicted Misdemeanants including DUI's

Notes:

*Classification and gender subtotals may not sum to the monthly total due to rounding.

Source: "Average Daily Population of Detention Facilities", Davidson County Sheriff's Office.

Average Daily Population Summary by Classification

Month 2009	LSF	Monthly Change	Change Since Jan	PVF	Monthly Change	Change Since Jan
Jan	1,128	-5.4%		233	15.9%	
Feb	1,135	0.6%	0.6%	251	7.7%	7.7%
Mar	1,142	0.6%	1.2%	256	2.0%	9.9%
Apr	1,173	2.7%	4.0%	271	5.9%	16.3%
May	1,186	1.1%	5.1%	253	-6.6%	8.6%
Jun	1,201	1.3%	6.5%	246	-2.8%	5.6%
Jul	1,153	-4.0%	2.2%	271	10.2%	16.3%
Aug	1,116	-3.2%	-1.1%	300	10.7%	28.8%
Sep	1,167	4.6%	3.5%	263	-12.3%	12.9%
Oct	1,166	-0.1%	3.4%	259	-1.5%	11.2%
Nov						
Dec						
AVG	1,157	-0.2%		260	2.9%	

Month 2009	PVM	Monthly Change	Change Since Jan	OTHER (a)	Monthly Change	Change Since Jan	DHS/ICE** (b)	Monthly Change	Change Since Jan
Jan	38	15.2%		175	-6.4%		44	-18.5%	
Feb	29	-23.7%	-23.7%	189	8.0%	8.0%	36	-18.2%	-18.2%
Mar	34	17.2%	-10.5%	194	2.6%	10.9%	29	-19.4%	-34.1%
Apr	32	-5.9%	-15.8%	195	0.5%	11.4%	27	-6.9%	-38.6%
May	41	28.1%	7.9%	191	-2.1%	9.1%	29	7.4%	-34.1%
Jun	37	-9.8%	-2.6%	185	-3.1%	5.7%	20	-31.0%	-54.5%
Jul	26	-29.7%	-31.6%	192	3.8%	9.7%	17	-15.0%	-61.4%
Aug	25	-3.8%	-34.2%	207	7.8%	18.3%	18	5.9%	-59.1%
Sep	33	32.0%	-13.2%	221	6.8%	26.3%	14	-22.2%	-68.2%
Oct	36	9.1%	-5.3%	228	3.2%	30.3%	18	28.6%	-59.1%
Nov									
Dec									
AVG	33	2.9%		198	2.1%		25	-8.9%	

****A MORE DETAILED BREAKDOWN OF DHS/ICE INMATES IS ON PAGE 9 OF THIS REPORT**

LSF	Locally Sentenced Felons
PVF	Probation Violators, Felony
PVM	Probation Violators, Misdemeanor
OTHER	All other classifications
DHS/ICE	Detained for U.S. Department of Homeland Security/Immigration and Customs Enforcement

Notes:

*Classification and gender subtotals may not sum to the monthly total due to rounding.

(a) Other classifications include the following charge classes: CIVCON, SPARVIO, STATESPL, STATE, FED (with no active immigration charge), GOVERNOR, NONE, NULL (with no active charges, ICE Detainer or Custody Holds).

(b) The Sheriff's office began screening for legal immigration status in mid-April 2007. The number in the table represents: (1) inmates who have no active local charges and are being held on a 48-hour ICE Detainer, (2) inmates who have no active local charges and are being held on a DHS/ICE Custody Hold, and (3) inmates who have only an active immigration charge.

Source: "Average Daily Population of Detention Facilities", Davidson County Sheriff's Office.

**Percent of Population by Classification
Including LSF Inmates**

THESE TABLES **INCLUDE** LOCALLY SENTENCED FELONS

Month 2009	ADP	PTF	PTM	CM/DUI	LSF	PVF	PVM	OTHER (a)	DHS/ICE (b)
Jan	3,572	31.5%	4.2%	19.0%	31.6%	6.5%	1.1%	4.9%	1.2%
Feb	3,566	29.6%	4.2%	20.3%	31.8%	7.0%	0.8%	5.3%	1.0%
Mar	3,631	28.9%	4.1%	21.3%	31.5%	7.1%	0.9%	5.3%	0.8%
Apr	3,654	28.1%	4.3%	21.2%	32.1%	7.4%	0.9%	5.3%	0.7%
May	3,663	28.2%	4.6%	20.9%	32.4%	6.9%	1.1%	5.2%	0.8%
Jun	3,709	27.9%	4.5%	22.0%	32.4%	6.6%	1.0%	5.0%	0.5%
Jul	3,692	28.0%	4.6%	22.5%	31.2%	7.3%	0.7%	5.2%	0.5%
Aug	3,751	28.7%	3.9%	23.0%	29.8%	8.0%	0.7%	5.5%	0.5%
Sep	3,737	28.0%	3.9%	22.6%	31.2%	7.0%	0.9%	5.9%	0.4%
Oct	3,676	27.3%	4.0%	22.3%	31.7%	7.0%	1.0%	6.2%	0.5%
Nov									
Dec									
AVG	3,665	28.6%	4.2%	21.5%	31.6%	7.1%	0.9%	5.4%	0.7%

Month 2009	ADP	Percent Change	
		Monthly	Since Jan
Jan	3,572	0.0%	
Feb	3,566	-0.2%	-0.2%
Mar	3,631	1.8%	1.7%
Apr	3,654	0.6%	2.3%
May	3,663	0.2%	2.5%
Jun	3,709	1.3%	3.8%
Jul	3,692	-0.5%	3.4%
Aug	3,751	1.6%	5.0%
Sep	3,737	-0.4%	4.6%
Oct	3,676	-1.6%	2.9%
Nov			
Dec			

Notes:

(a) Other classifications include the following charge classes: CIVCON, SPARVIO, STATESPL, STATE, FED (with no active immigration charge), GOVERNOR, NONE, NULL (with no active charges, ICE Detainer or Custody Holds).

(b) The Sheriff's office began screening for legal immigration status in mid-April 2007. The number in the table represents: (1) inmates who have no active local charges and are being held on a 48-hour ICE Detainer, (2) inmates who have no active local charges and are being held on a DHS/ICE Custody Hold, and (3) inmates who have only an active immigration charge.

Source: "Average Daily Population of Detention Facilities", Davidson County Sheriff's Office.

Percent of Population by Classification
Excluding LSF Inmates

THESE TABLES EXCLUDE LOCALLY SENTENCED FELONS

Month 2009	ADP	PTF	PTM	CM/DUI	PVF	PVM	OTHER (a)	DHS/ICE (b)
Jan	2,444	46.0%	6.2%	27.8%	9.5%	1.6%	7.2%	1.8%
Feb	2,431	43.4%	6.1%	29.7%	10.3%	1.2%	7.8%	1.5%
Mar	2,489	42.2%	6.0%	31.1%	10.3%	1.4%	7.8%	1.2%
Apr	2,481	41.4%	6.3%	31.2%	10.9%	1.3%	7.9%	1.1%
May	2,477	41.7%	6.7%	30.8%	10.2%	1.7%	7.7%	1.2%
Jun	2,508	41.3%	6.7%	32.5%	9.8%	1.5%	7.4%	0.8%
Jul	2,539	40.7%	6.6%	32.7%	10.7%	1.0%	7.6%	0.7%
Aug	2,635	40.8%	5.6%	32.7%	11.4%	0.9%	7.9%	0.7%
Sep	2,570	40.7%	5.7%	32.9%	10.2%	1.3%	8.6%	0.5%
Oct	2,510	39.9%	5.8%	32.7%	10.3%	1.4%	9.1%	0.7%
Nov								
Dec								
AVG	2,508	41.8%	6.2%	31.4%	10.4%	1.3%	7.9%	1.0%

Month 2009	ADP	Percent Change	
		Monthly	Since Jan
Jan	2,444	3.7%	
Feb	2,431	-0.5%	-0.5%
Mar	2,489	2.4%	1.8%
Apr	2,481	-0.3%	1.5%
May	2,477	-0.2%	1.4%
Jun	2,508	1.3%	2.6%
Jul	2,539	1.2%	3.9%
Aug	2,635	3.8%	7.8%
Sep	2,570	-2.5%	5.2%
Oct	2,510	-2.3%	2.7%
Nov			
Dec			

Notes:

(a) Other classifications include the following charge classes: CIVCON, SPARVIO, STATESPL, STATE, FED (with no active immigration charge), GOVERNOR, NONE, NULL (with no active charges, ICE Detainer or Custody Holds).

(b) The Sheriff's office began screening for legal immigration status in mid-April 2007. The number in the table represents: (1) inmates who have no active local charges and are being held on a 48-hour ICE Detainer, (2) inmates who have no active local charges and are being held on a DHS/ICE Custody Hold, and (3) inmates who have only an active immigration charge.

Source: "Average Daily Population of Detention Facilities", Davidson County Sheriff's Office.

Percent Change in the Average Daily Population from Previous Year to Current Year

Month	ADP			PTF			PTM		
	2008	2009	% Change	2008	2009	% Change	2008	2009	% Change
Jan	3,486	3,572	2.5%	1,037	1,124	8.4%	142	151	6.3%
Feb	3,463	3,566	3.0%	1,010	1,055	4.5%	124	148	19.4%
Mar	3,510	3,631	3.4%	1,010	1,050	4.0%	129	149	15.5%
Apr	3,664	3,654	-0.3%	1,075	1,028	-4.4%	142	156	9.9%
May	3,786	3,663	-3.2%	1,147	1,033	-9.9%	158	167	5.7%
Jun	3,855	3,709	-3.8%	1,154	1,036	-10.2%	179	168	-6.1%
Jul	3,807	3,692	-3.0%	1,157	1,034	-10.6%	176	168	-4.5%
Aug	3,807	3,751	-1.5%	1,187	1,076	-9.4%	183	148	-19.1%
Sep	3,839	3,737	-2.7%	1,170	1,047	-10.5%	176	147	-16.5%
Oct	3,738	3,676	-1.7%	1,147	1,002	-12.6%	158	146	-7.6%
Nov	3,756			1,166			155		
Dec	3,603			1,112			147		
Avg	3,693	3,665	-0.7%	1,114	1,049	-5.1%	156	155	0.3%

Month	CM+DUI			LSF			PVF		
	2008	2009	% Change	2008	2009	% Change	2008	2009	% Change
Jan	612	679	10.9%	1,151	1,128	-2.0%	272	233	-14.3%
Feb	613	723	17.9%	1,167	1,135	-2.7%	259	251	-3.1%
Mar	628	775	23.4%	1,191	1,142	-4.1%	233	256	9.9%
Apr	655	773	18.0%	1,203	1,173	-2.5%	252	271	7.5%
May	702	764	8.8%	1,213	1,186	-2.2%	224	253	12.9%
Jun	734	816	11.2%	1,208	1,201	-0.6%	262	246	-6.1%
Jul	703	831	18.2%	1,210	1,153	-4.7%	247	271	9.7%
Aug	691	861	24.6%	1,206	1,116	-7.5%	248	300	21.0%
Sep	719	845	17.5%	1,201	1,167	-2.8%	255	263	3.1%
Oct	724	821	13.4%	1,184	1,166	-1.5%	266	259	-2.6%
Nov	702			1,206			275		
Dec	677			1,192			201		
Avg	680	789	16.4%	1,194	1,157	-3.1%	250	260	3.8%

Month	PVM			Other (a)			DHS/ICE (b)		
	2008	2009	% Change	2008	2009	% Change	2008	2009	% Change
Jan	18	38	111.1%	184	175	-4.9%	69	44	-36.2%
Feb	18	29	61.1%	198	189	-4.5%	74	36	-51.4%
Mar	22	34	54.5%	207	194	-6.3%	90	29	-67.8%
Apr	28	32	14.3%	209	195	-6.7%	103	27	-73.8%
May	26	41	57.7%	215	191	-11.2%	100	29	-71.0%
Jun	20	37	85.0%	206	185	-10.2%	92	20	-78.3%
Jul	25	26	4.0%	214	192	-10.3%	75	17	-77.3%
Aug	32	25	-21.9%	206	207	0.5%	54	18	-66.7%
Sep	30	33	10.0%	200	221	10.5%	88	14	-84.1%
Oct	24	36	50.0%	195	228	16.9%	40	18	-55.0%
Nov	19			193			40		
Dec	33			187			54		
Avg	25	33	42.6%	201	198	-2.6%	73	25	-66.1%

ADP	Average Daily Population
PTF	Pretrial Felons
PTM	Pretrial Misdemeanants
CM+DUI	Convicted Misdemeanants including DUI's
LSF	Locally Sentenced Felons
PVF	Probation Violators, Felony
PVM	Probation Violators, Misdemeanor
OTHER	All other classifications
DHS/ICE	Detained for U.S. Department of Homeland Security/Immigration and Customs Enforcement

Notes:

(a) Other classifications include the following charge classes: CIVCON, SPARVIO, STATESPL, STATE, FED (with no active immigration charge), GOVERNOR, NONE, NULL (with no active charges, ICE Detainer or Custody Holds).

(b) The Sheriff's office began screening for legal immigration status in mid-April 2007. The number in the table represents: (1) inmates who have no active local charges and are being held on a 48-hour ICE Detainer, (2) inmates who have no active local charges and are being held on a DHS/ICE Custody Hold, and (3) inmates who have only an active immigration charge.

Source: "Average Daily Population of Detention Facilities", Davidson County Sheriff's Office.

Adult Physical Arrests

MONTH	2008	2009	% Change		
			Previous Month to Current Month	2008 Month to 2009 Month	Since January 2009
Jan	3,530	3,792	10.4%	7.4%	
Feb	3,115	3,649	-3.8%	17.1%	-3.8%
Mar	3,734	4,350	19.2%	16.5%	14.7%
Apr	3,768	3,981	-8.5%	5.7%	5.0%
May	3,960	4,145	4.1%	4.7%	9.3%
Jun	3,859	3,972	-4.2%	2.9%	4.7%
Jul	3,831	3,888	-2.1%	1.5%	2.5%
Aug	4,057	4,092	5.2%	0.9%	7.9%
Sep	3,823	3,826	-6.5%	0.1%	0.9%
Oct	3,694	3,794	-0.8%	2.7%	0.1%
Nov	3,453				
Dec	3,436				
YTD Total	44,260	39,489	Avg: 1.3%	Avg: 5.9%	0.1%

MONTH	2008 YTD TOTAL	2009 YTD TOTAL	2008 YTD to 2009 YTD % Change
Jan	3,530	3,792	7.4%
Feb	6,645	7,441	12.0%
Mar	10,379	11,791	13.6%
Apr	14,147	15,772	11.5%
May	18,107	19,917	10.0%
Jun	21,966	23,889	8.8%
Jul	25,797	27,777	7.7%
Aug	29,854	31,869	6.7%
Sep	33,677	35,695	6.0%
Oct	37,371	39,489	5.7%
Nov	40,824		
Dec	44,260		

Source: Metropolitan Police Department of Nashville and Davidson County

Note: This report includes the number of physical arrests made in Davidson County during the time period above. A physical arrest is a custodial arrest and represents an individual body and not the number of charges issued to a person. The figures above include adult arrestees only.

AVERAGE DAILY POPULATION AND LENGTH OF STAY FOR DHS/ICE INMATES (a)

Month 2009	AVERAGE DAILY POPULATION			MONTHLY CHANGE			CHANGE SINCE JANUARY		
	DHS/ICE DETAINERS (b)	DHS/ICE CUSTODY (c)	TOTAL ALL ICE INMATES	DHS/ICE DETAINERS (b)	DHS/ICE CUSTODY (c)	TOTAL ALL ICE INMATES	DHS/ICE DETAINERS (b)	DHS/ICE CUSTODY (c)	TOTAL ALL ICE INMATES
Jan	8	36	44	49.1%	-25.0%	-17.4%			
Feb	8	28	36	-6.2%	-24.2%	-19.1%	-6.2%	-24.2%	-19.1%
Mar	5	24	29	-35.2%	-12.7%	-19.4%	-39.2%	-33.8%	-34.8%
Apr	6	21	27	20.0%	-12.5%	-6.9%	-27.1%	-42.1%	-39.3%
May	6	24	29	-3.2%	12.6%	7.4%	-29.4%	-34.8%	-34.8%
Jun	4	16	20	-25.4%	-31.5%	-31.0%	-47.3%	-55.3%	-55.0%
Jul	3	14	17	-37.5%	-12.8%	-15.8%	-67.1%	-61.0%	-62.1%
Aug	2	16	18	-13.1%	9.8%	6.1%	-71.4%	-57.2%	-59.8%
Sep	3	11	14	10.4%	-26.5%	-21.7%	-68.4%	-68.6%	-68.5%
Oct	4	14	18	43.9%	24.8%	28.3%	-54.5%	-60.8%	-59.6%
Nov									
Dec									
AVG	5	20	25	0.3%	-9.8%	-8.9%	-54.5%	-60.8%	-59.6%

Month 2009	AVERAGE LENGTH OF STAY (DAYS) (d)			MONTHLY CHANGE			CHANGE SINCE JANUARY		
	DHS/ICE DETAINERS (b)	DHS/ICE CUSTODY (c)	TOTAL ALL ICE INMATES	DHS/ICE DETAINERS (b)	DHS/ICE CUSTODY (c)	TOTAL ALL ICE INMATES	DHS/ICE DETAINERS (b)	DHS/ICE CUSTODY (c)	TOTAL ALL ICE INMATES
Jan	1.6	5.4	6.1	-29.1%	-10.6%	-9.4%			
Feb	2.1	3.6	4.8	30.0%	-32.3%	-20.0%	30.0%	-32.3%	-20.0%
Mar	1.7	3.5	4.0	-20.7%	-3.8%	-17.4%	3.1%	-34.9%	-33.9%
Apr	3.1	3.4	4.9	82.4%	-2.9%	22.5%	88.0%	-36.8%	-19.1%
May	1.5	3.4	4.1	-51.6%	0.0%	-16.3%	-9.0%	-36.8%	-32.3%
Jun	1.5	3.3	3.3	0.7%	-4.4%	-18.6%	-8.4%	-39.6%	-44.9%
Jul	1.6	3.2	3.4	5.5%	-1.6%	3.1%	-3.4%	-40.6%	-43.2%
Aug	1.3	3.6	3.7	-17.5%	13.2%	8.0%	-20.3%	-32.7%	-38.7%
Sep	1.9	3.2	3.4	44.2%	-12.3%	-8.6%	14.9%	-41.0%	-43.9%
Oct	1.7	3.1	3.3	-10.4%	-2.8%	-1.7%	2.9%	-42.6%	-44.9%
Nov									
Dec									
AVG	1.8	3.6	4.1	3.3%	-5.8%	-5.8%	2.9%	-42.6%	-44.9%

Notes:

*Column totals may not sum to Total due to rounding.

(a) In April 2007 the Davidson County Sheriff's Office began the 287 (g) program in conjunction with U.S. Department of Homeland Security/ Immigration and Customs Enforcement (DHS/ICE). This program grants the Sheriff's Office the authority to check the immigration status of all non-U.S. born arrestees.

(b) DHS/ICE Detainers includes inmates who have no active local charges and are being held on a 48-hour detainer for U.S. Department of Homeland Security/Immigration and Customs Enforcement.

(c) DHS/ICE Custody includes inmates who have no active local charges and are being held on a U.S. Department of Homeland Security/Immigration and Customs Enforcement Custody Hold or inmates who have only an active immigration charge.

(d) Average Length of Stay is calculated as of the date released from the Davidson County correctional system. Some inmates spend time both as a DHS/ICE Detainer and then as a DHS/ICE Custody Hold. In these instances the length of stay is reported separately for the two categories, and the total ICE stay length is reported in the "Total All ICE Inmates" column.

Source: Jail Management System, Davidson County Sheriff's Office.